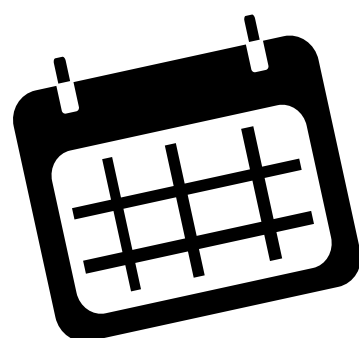
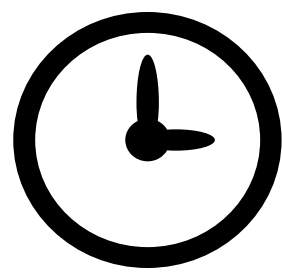


NDHS Policy at a Glance

All policies can be located in the student handbook. If you have lost your student handbook you may purchase a new handbook in the Guidance Office.

Attendance



Late to School?

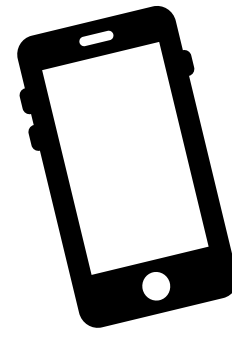
You must sign-in with the Attendance Secretary in the Main Office to receive a pass to class.

Unless you have a note from your parent/guardian excusing your lateness it is considered a tardy.

Commitment 180

Come to school everyday, all day to be invited to academic celebrations!

You must be here 4 or more hours to count as a full day.



Tardy Policy

You must be IN YOUR SCHEDULED CLASS when the bell rings.

Repeated tardiness will result in disciplinary action!

Leaving Early?

You must turn in a note from your parent or guardian by 8:30AM to be confirmed.

Students cannot sign themselves out of school.

Plug in to SCHOOL!

Miss a Day?

Remember to turn in a note to have your absence excused.

You are responsible for picking up your make-up work!

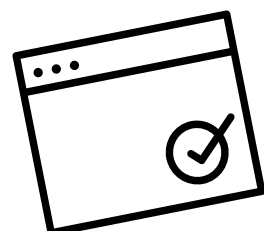
Miss more than 10 and you will lose privileges.

10/10 Rule

Students are not permitted to leave class the first 10 or last 10 minutes of the class period.

All students must have their agenda signed by a teacher to be dismissed from class.

Student Driving

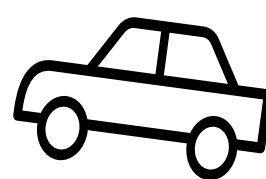
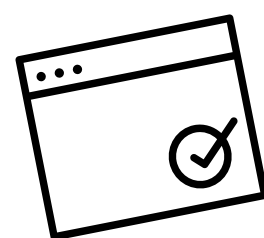
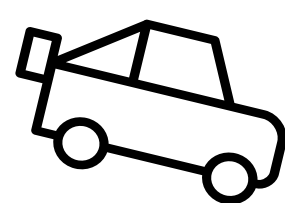


Students must purchase a parking permit from Mrs. Hurley in the Main Office.

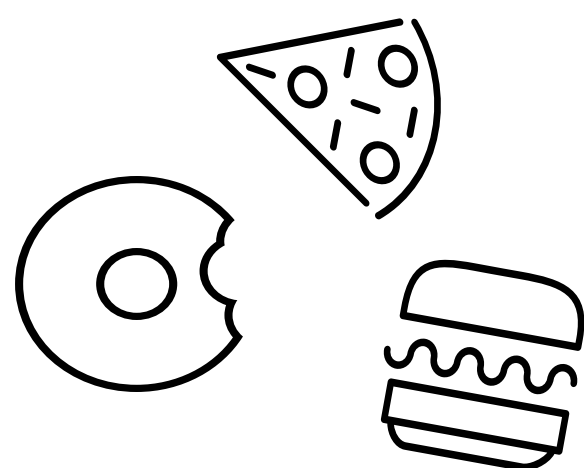
Students may not go to their vehicles during the school day without administrative permission.

Student drivers may not leave school property without parental/guardian permission confirmed in the Main Office by the attendance secretary.

Parking on school property is a privilege, and can be taken away if students cannot adhere to driver safety and/or school policy.

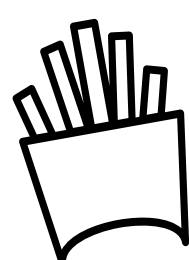


Food & Drink



All food and/or drinks must be consumed in the cafeteria. No food or beverages should enter the hallways or classrooms.

Students must remain in the cafeteria during their lunch period. Any student needing to leave the cafeteria must first obtain administrative permission.



Electronics

All electronic devices **MUST BE** out of sight when the 7:35AM bell sounds.

Use of devices is not permitted during or in between classes.

Electronic Devices may be used while seated during your lunch period in accordance to posted expectations.

Failure to adhere to DCPS and NDHS expectations may result in an electronic device being confiscated.

Dress Code

Students are to dress business casual to become college, career and community ready.

- Hats and hoods must be removed PRIOR to entering the school building.
- Clothes are not to reveal midriff or undergarments, and are to provide ample coverage of the body.
- Beachwear is NOT permitted.
- Inappropriate or discriminatory imagery/sayings will not be permitted.

Book Bags

For student and staff safety, book bags must be stored in the students locker. Book bags may only be brought to the students LAST PERIOD class. If it is a bag, and it has books in it...it is a book bag.

After School Activities

Students remaining after school for extra-curricular activities or tutoring **MUST BE SUPERVISED BY A STAFF MEMBER.**

Students must maintain a 2.0 GPA to be eligible for school extra curricular activities.

Students found on school property after hours unsupervised may be charged with trespassing.

Students must report to their assigned location by 3pm.